

Figure 7.53. Skeleton of the parotid region in lateral view.

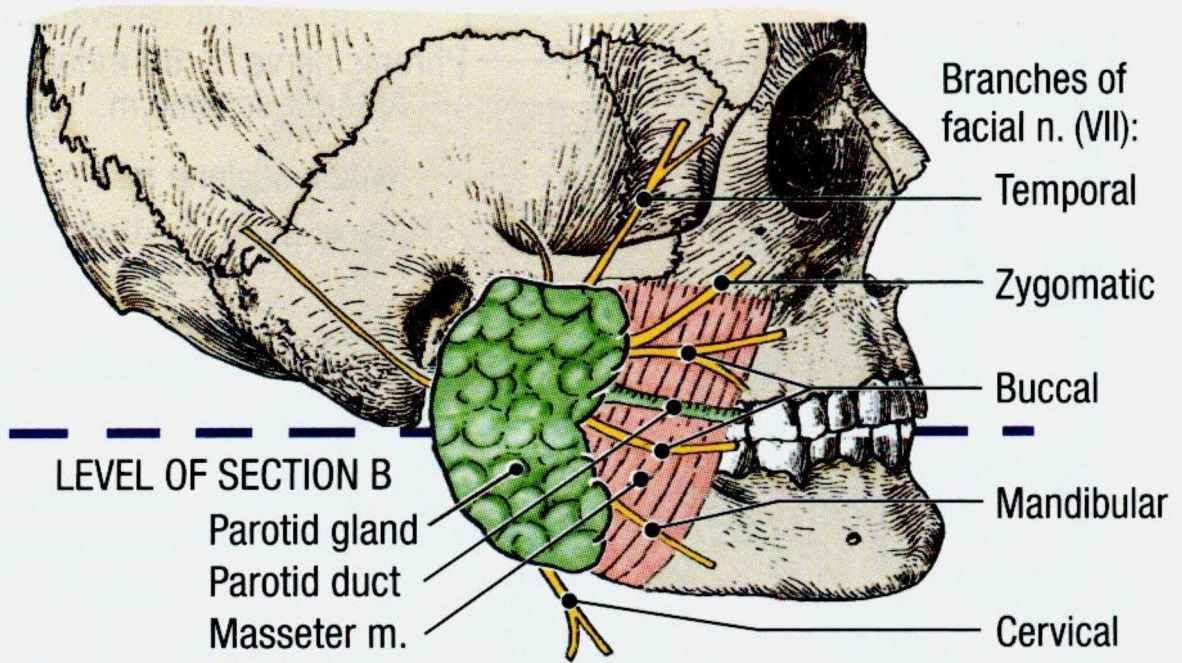
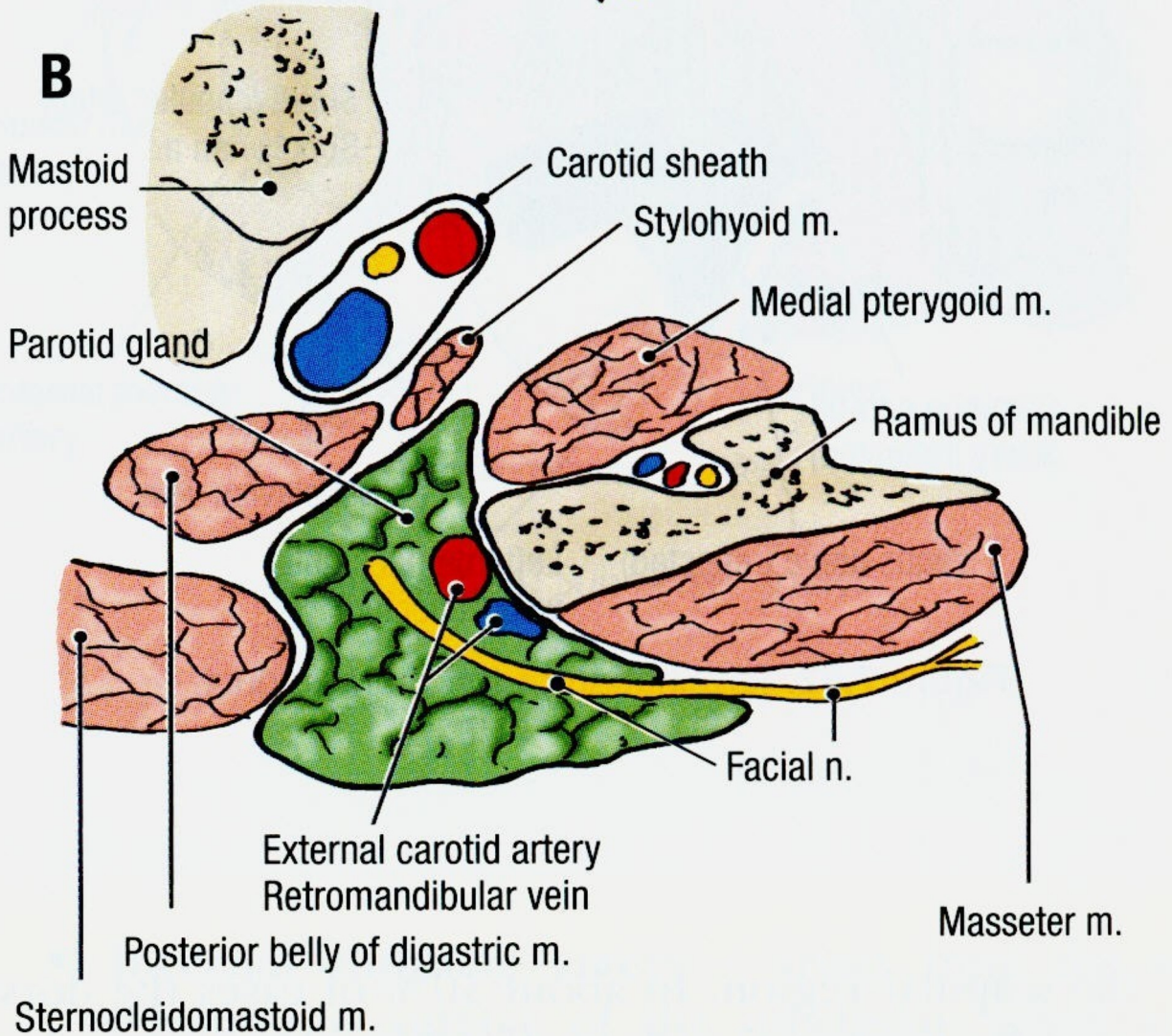
A**B**

Figure 7.54. Topographic relations of the parotid gland. A. Lateral view. Dashed line indicates the level of section B. B. Transverse section through the parotid bed.

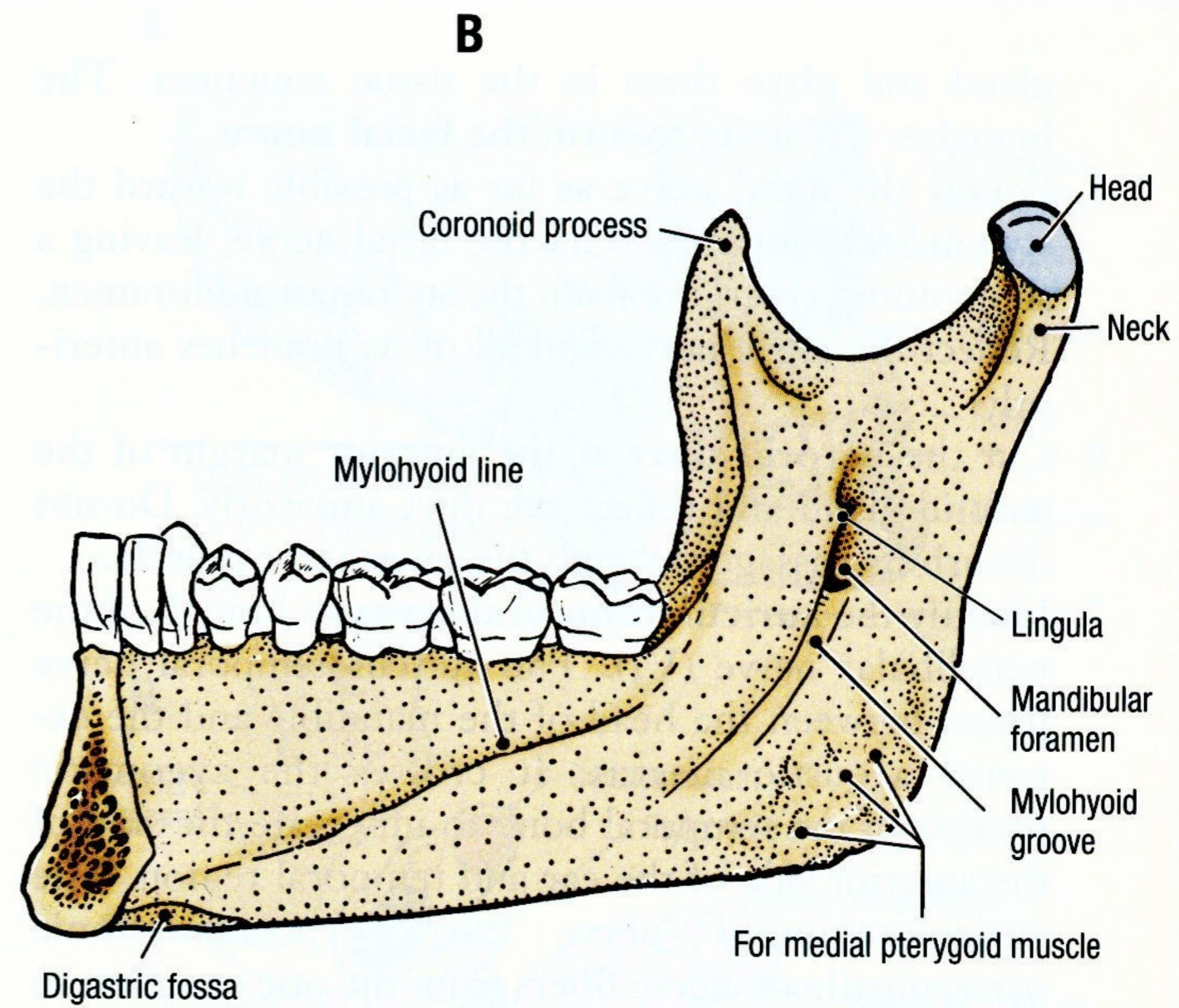
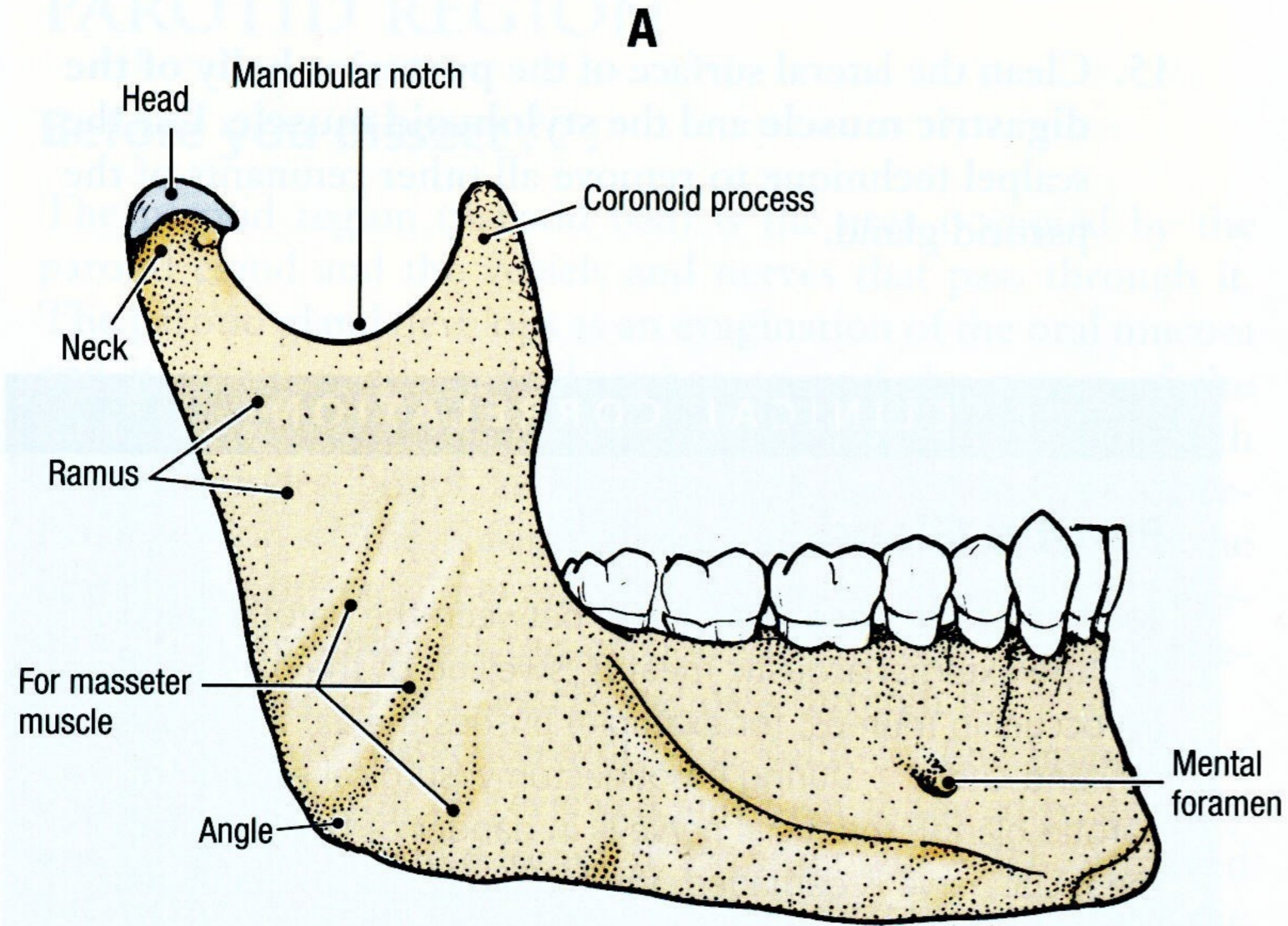


Figure 7.55. Mandible. **A.** External surface. **B.** Internal surface.

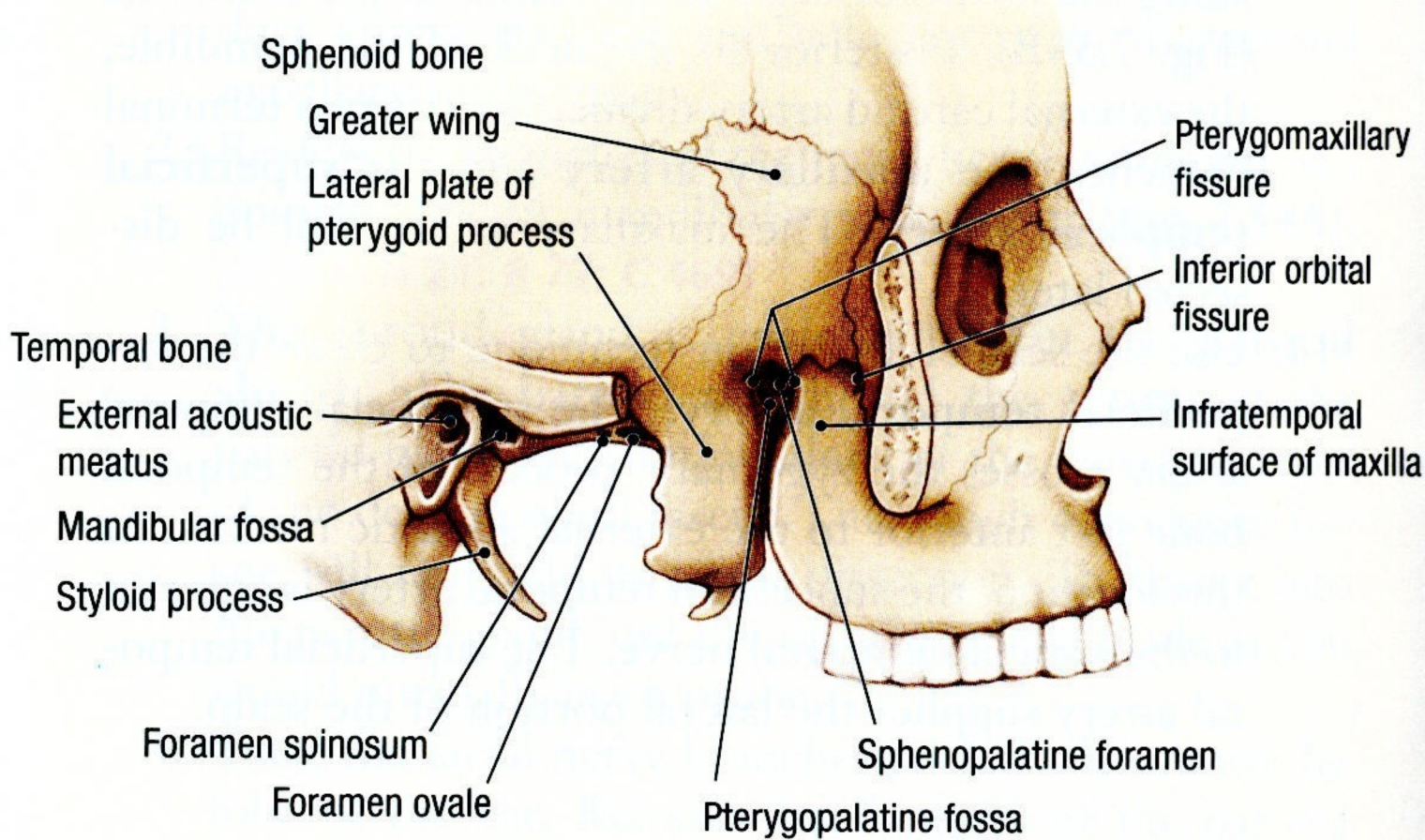


Figure 7.56. Skeleton of the infratemporal region.

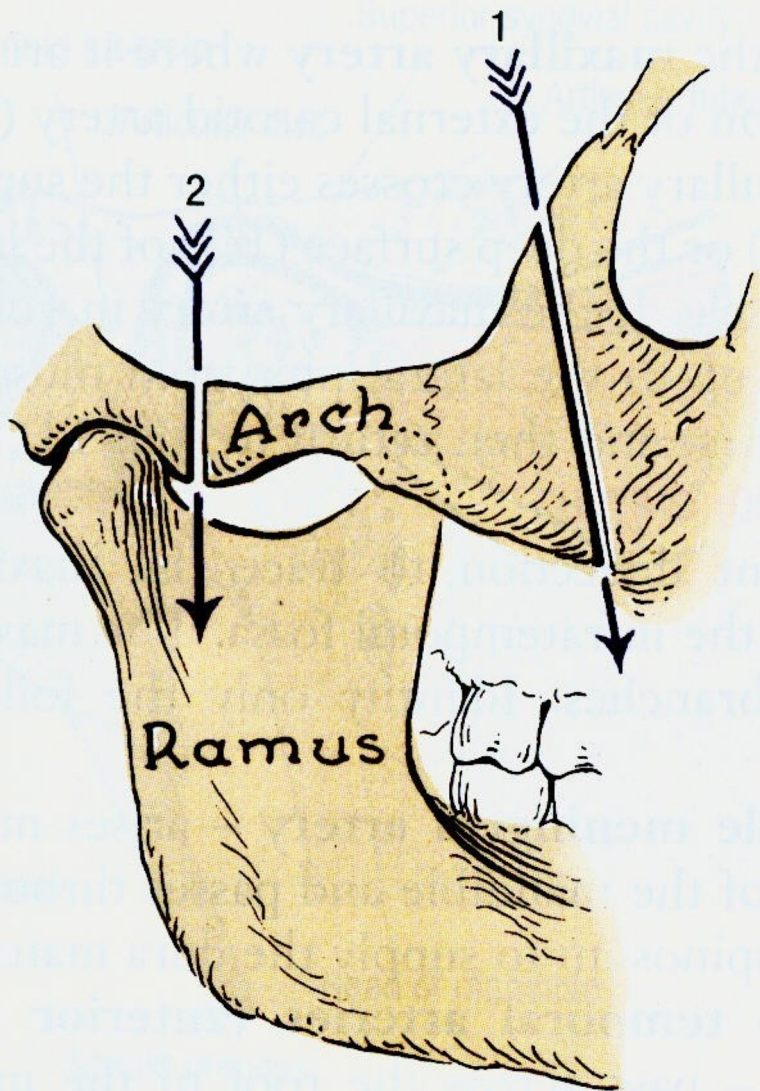


Figure 7.57. How to cut the zygomatic arch.

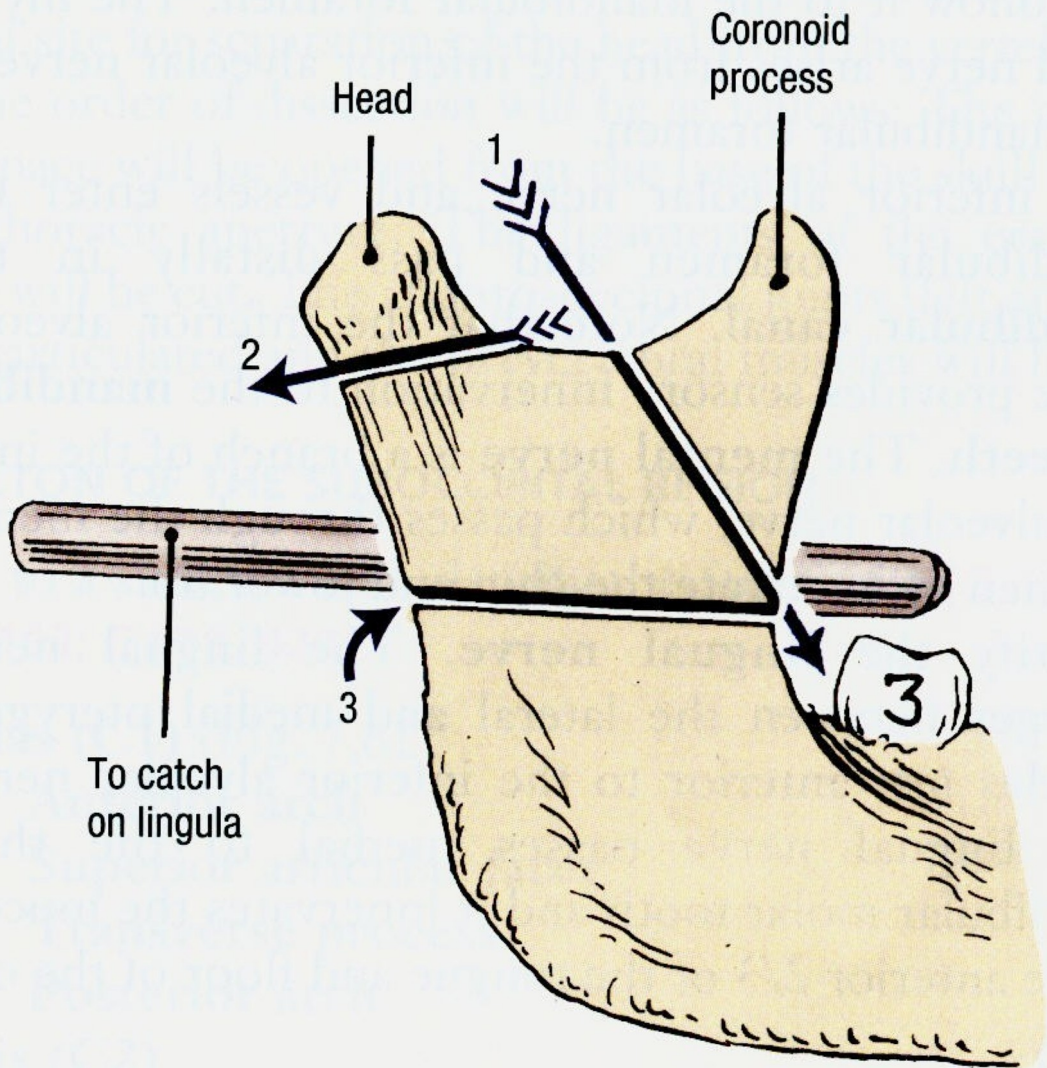
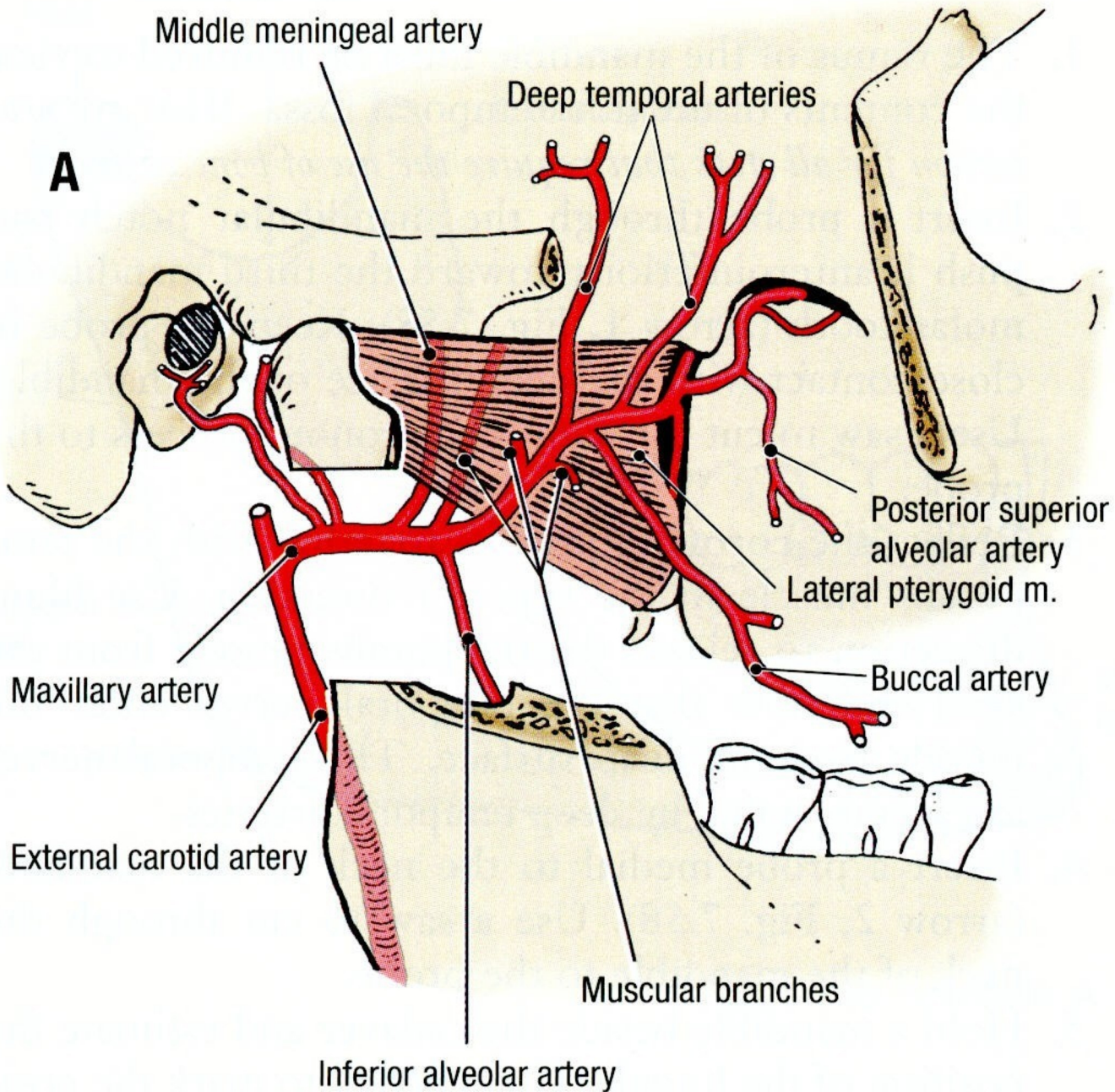
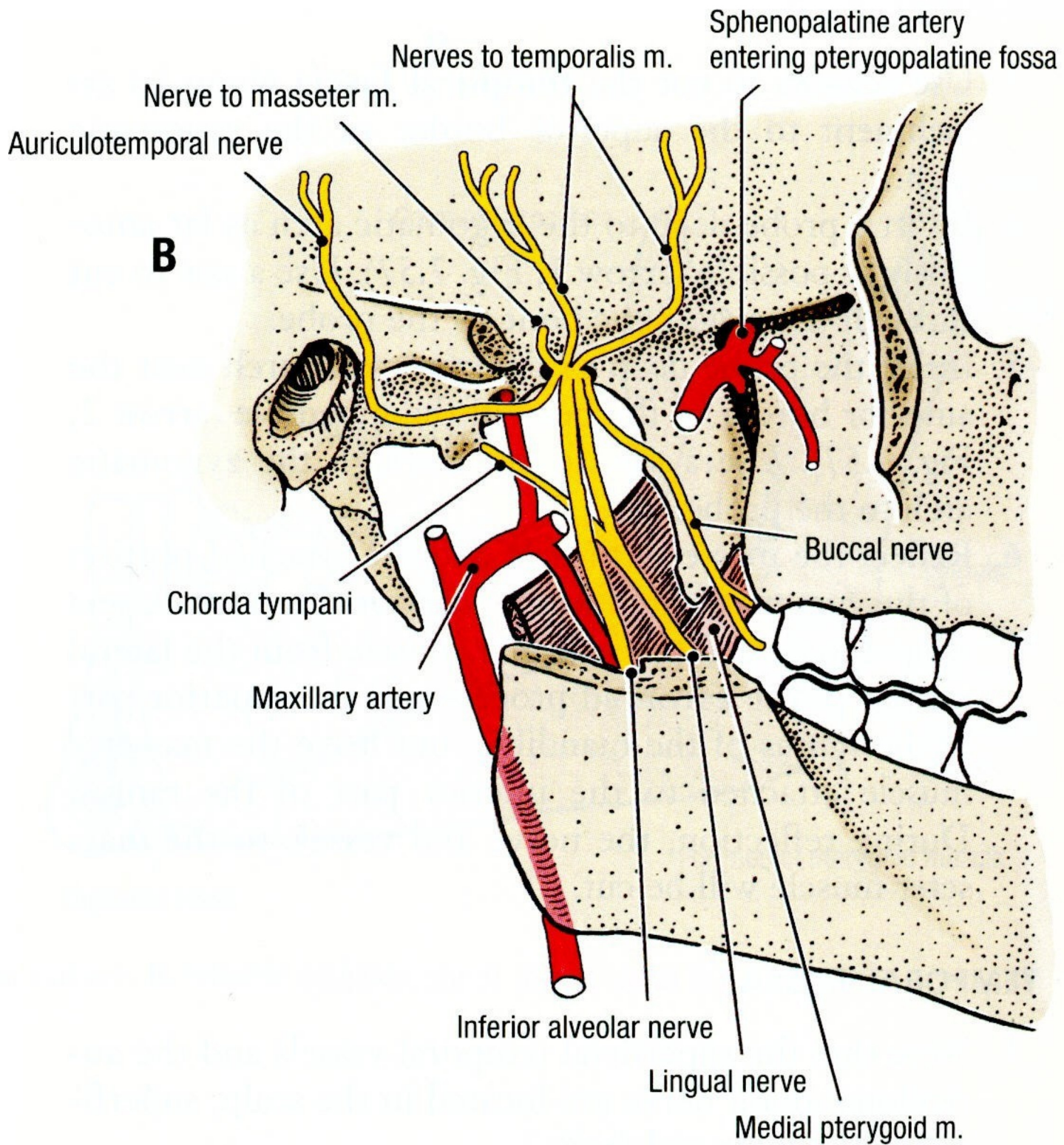


Figure 7.58. How to cut the ramus of the mandible.





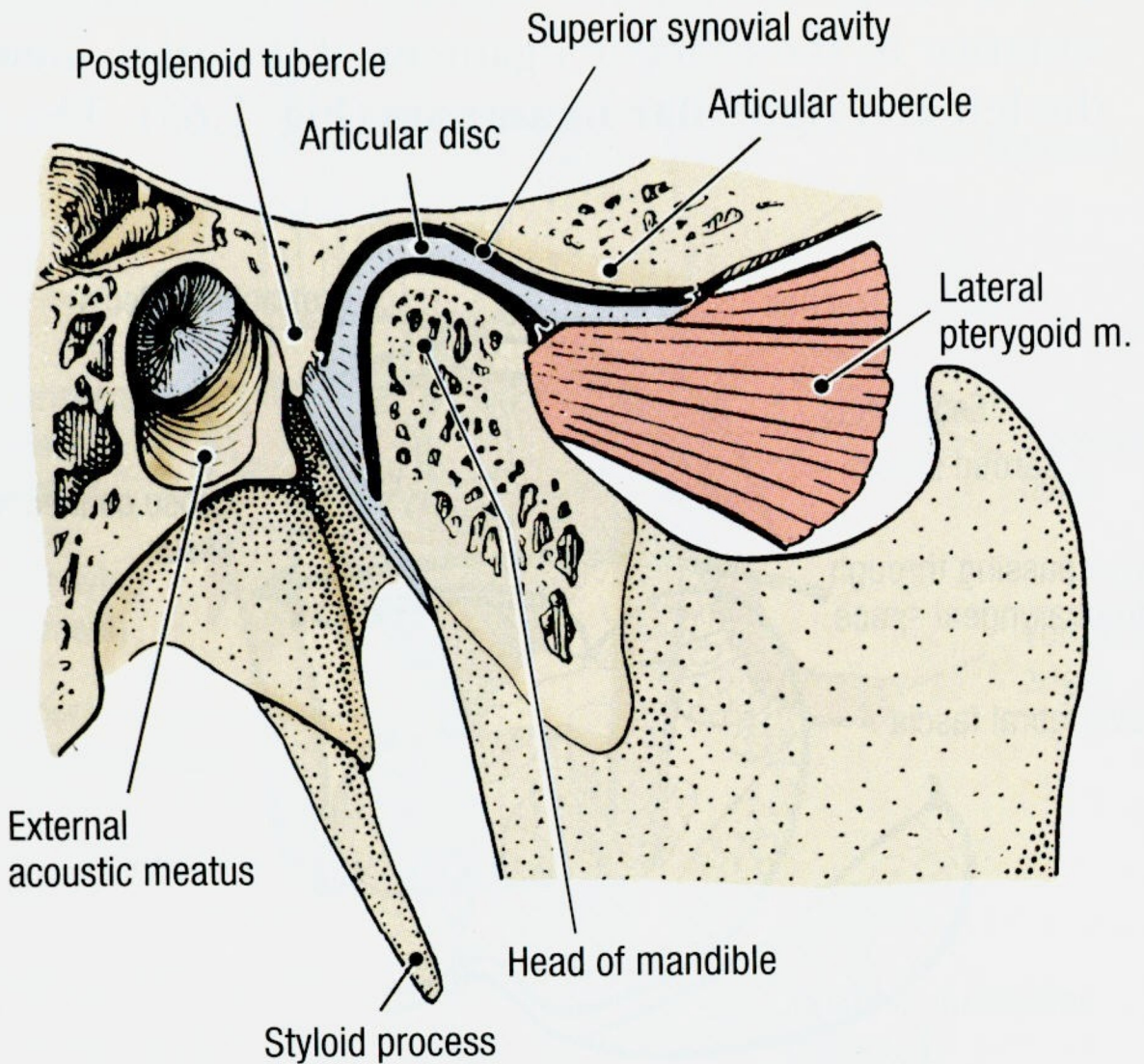


Figure 7.60. The temporomandibular joint.