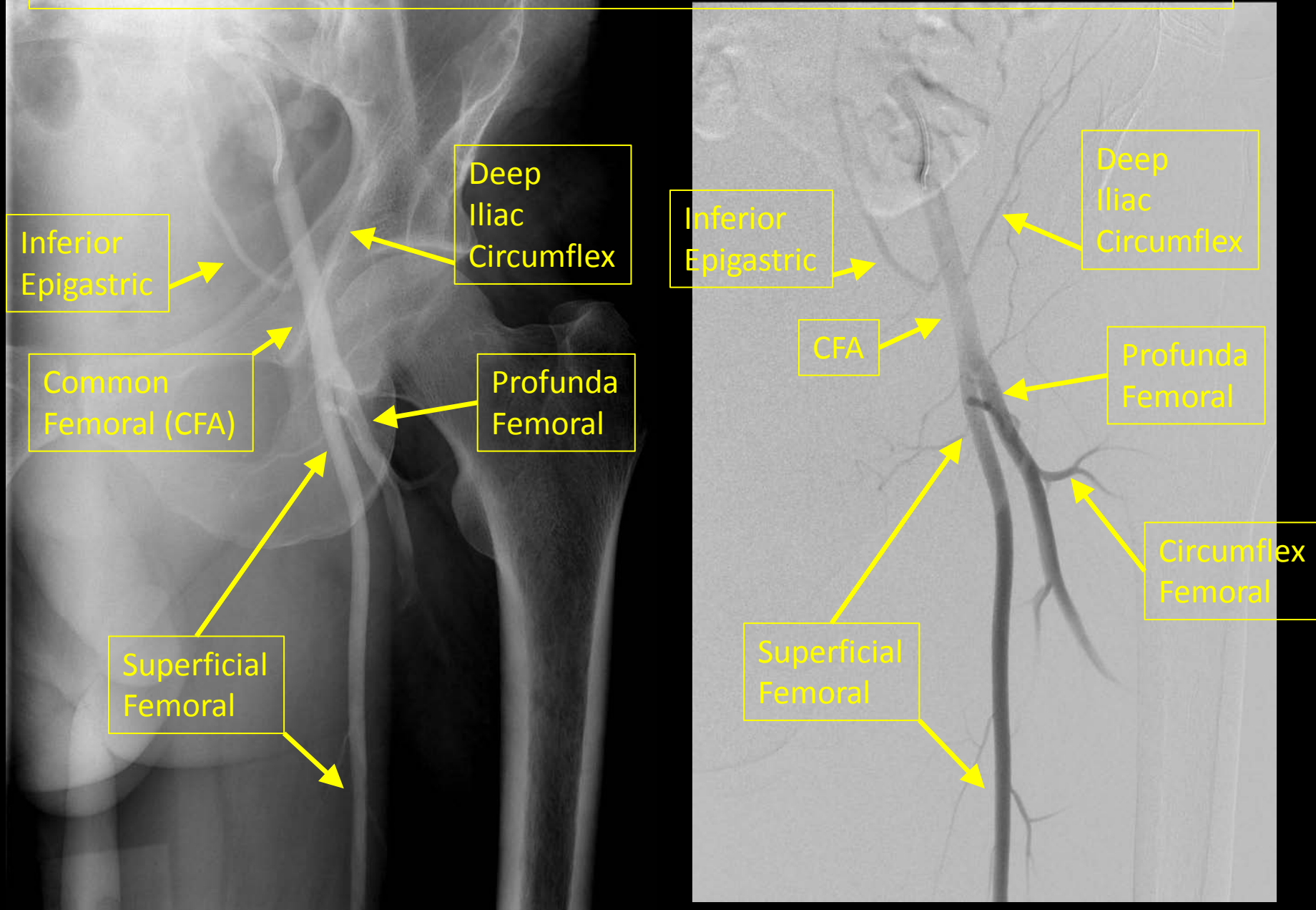
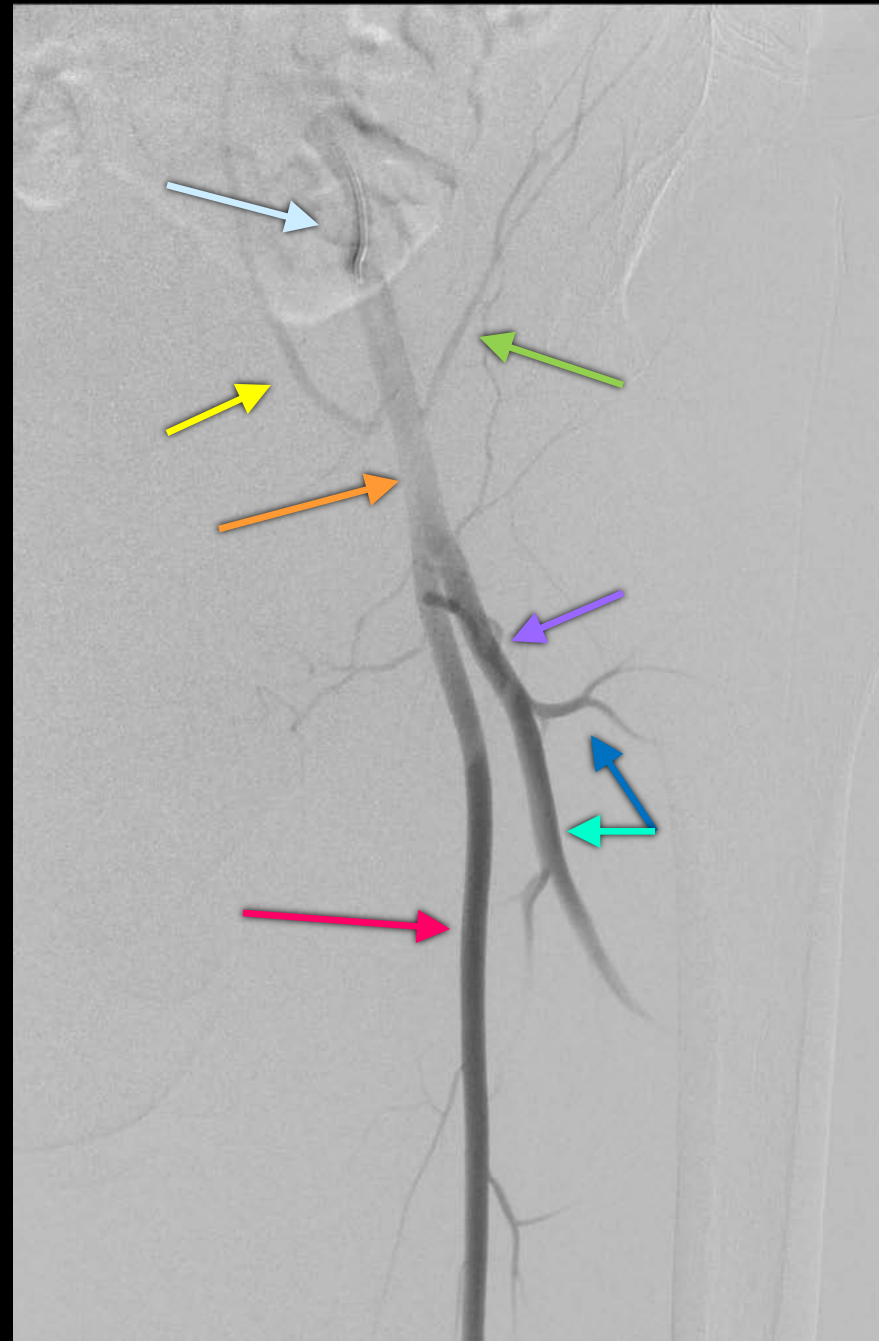


Selective Angiogram of the External Iliac Artery

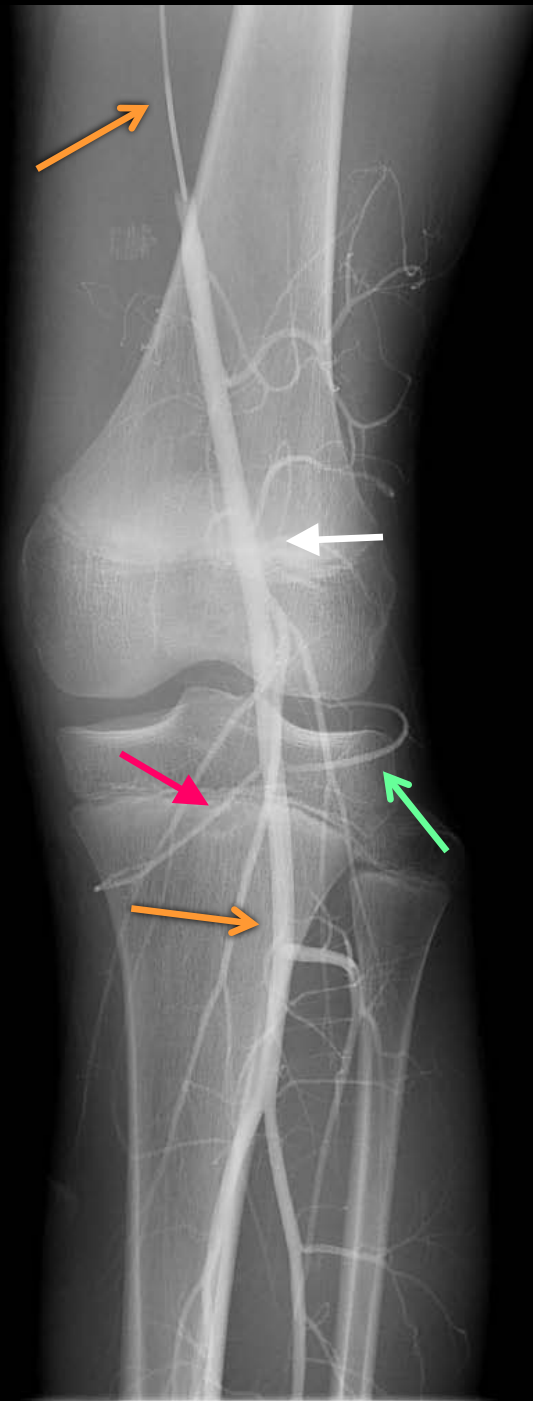


Arteries

- External iliac artery
 - Inferior epigastric
 - Deep Circuflex iliac
- Common Femoral artery
 - Superficial femoral
 - Femoral Circumflex a
 - Deep artery
 - Profunda femoral

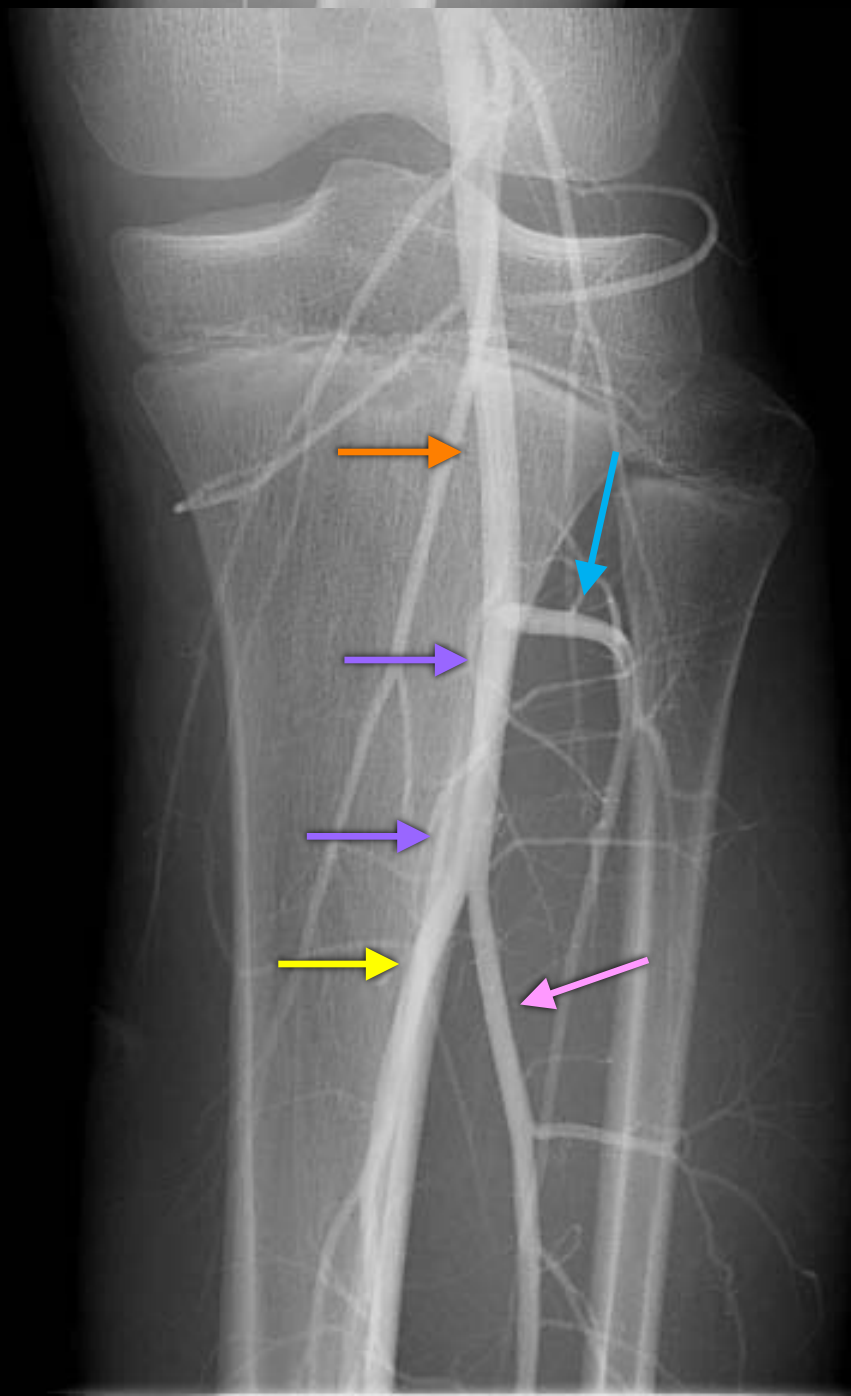


Arterial Anatomy Continued

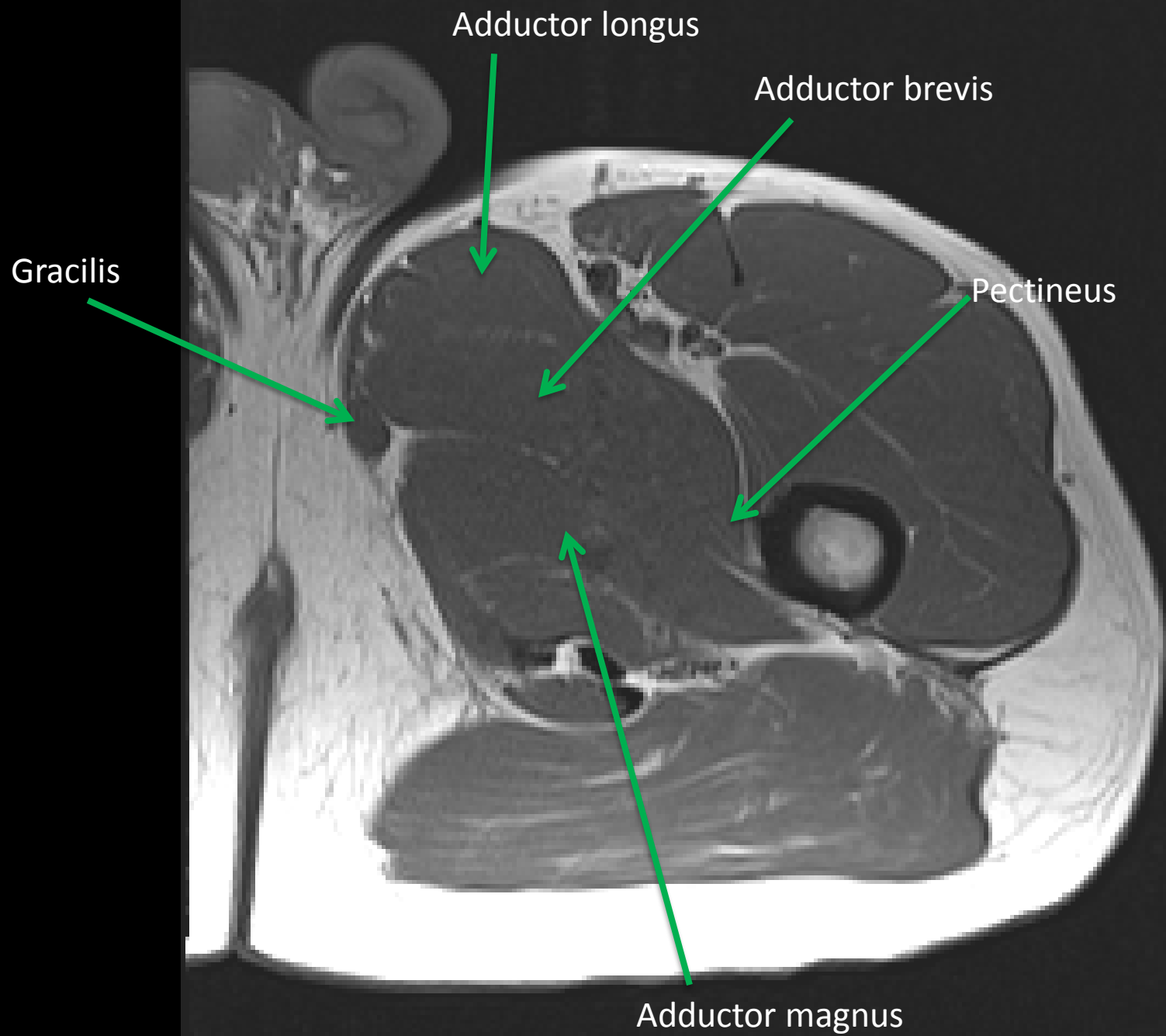


- Popliteal artery
 - Genicular
 - Superior lateral
 - Inferior lateral
 - Inferior Medial

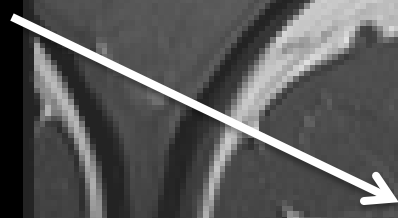
Arterial Anatomy Continued



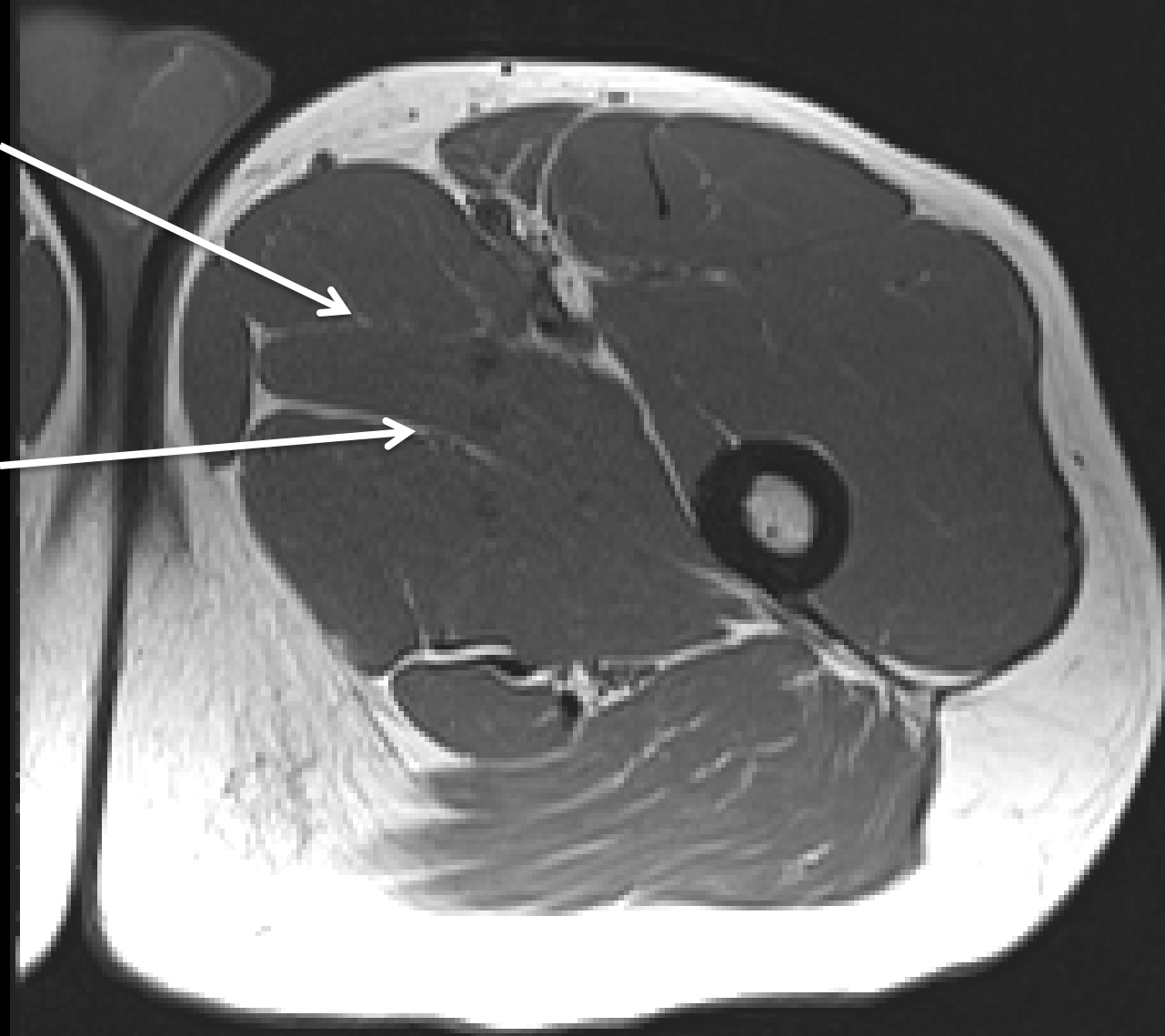
- **Popliteal artery**
 - Genicular
 - Superior lateral
 - Inferior lateral
 - Inferior Medial
- Anterior tibial artery
- Tibioperoneal trunk
 - Posterior tibial
 - Peroneal

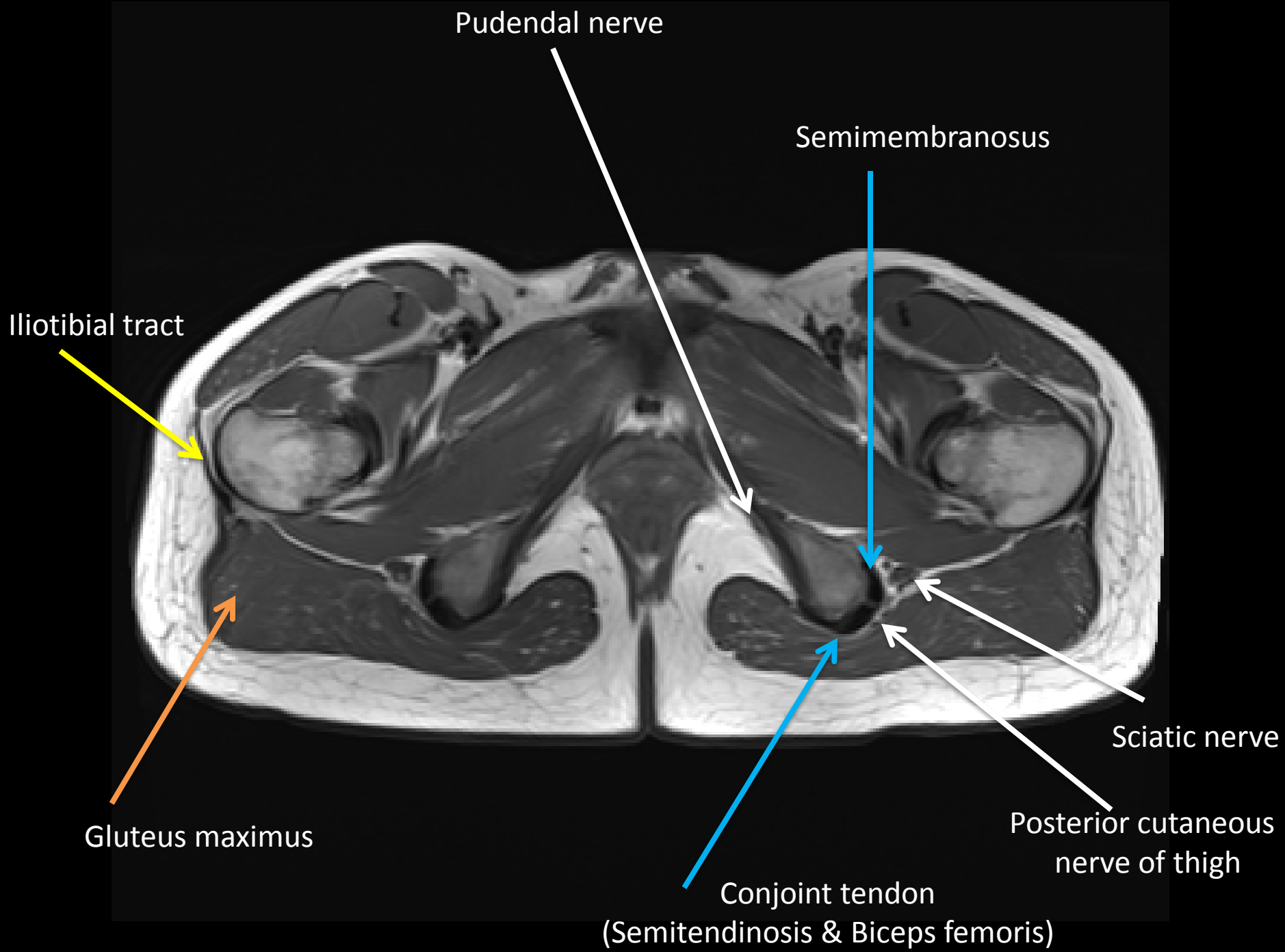


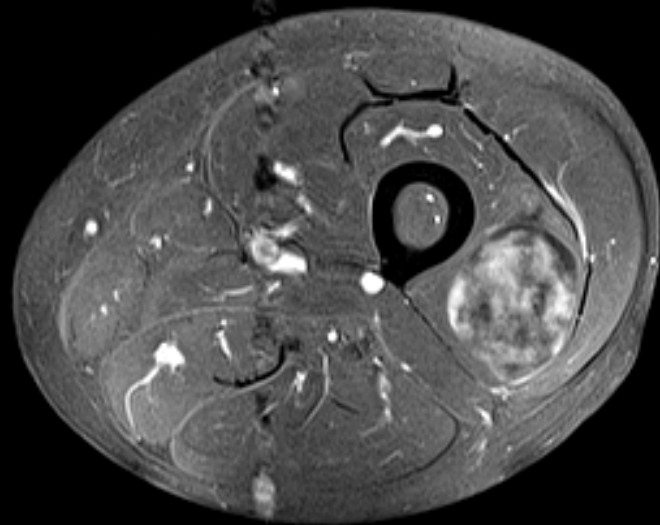
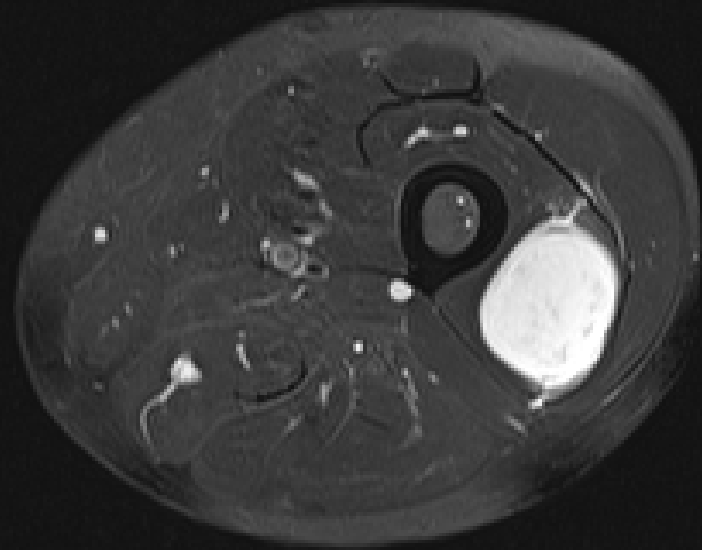
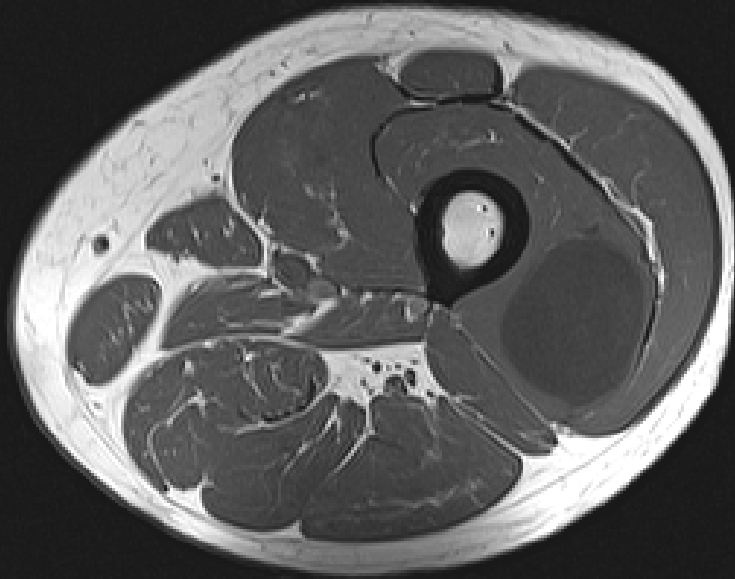
Anterior
branch



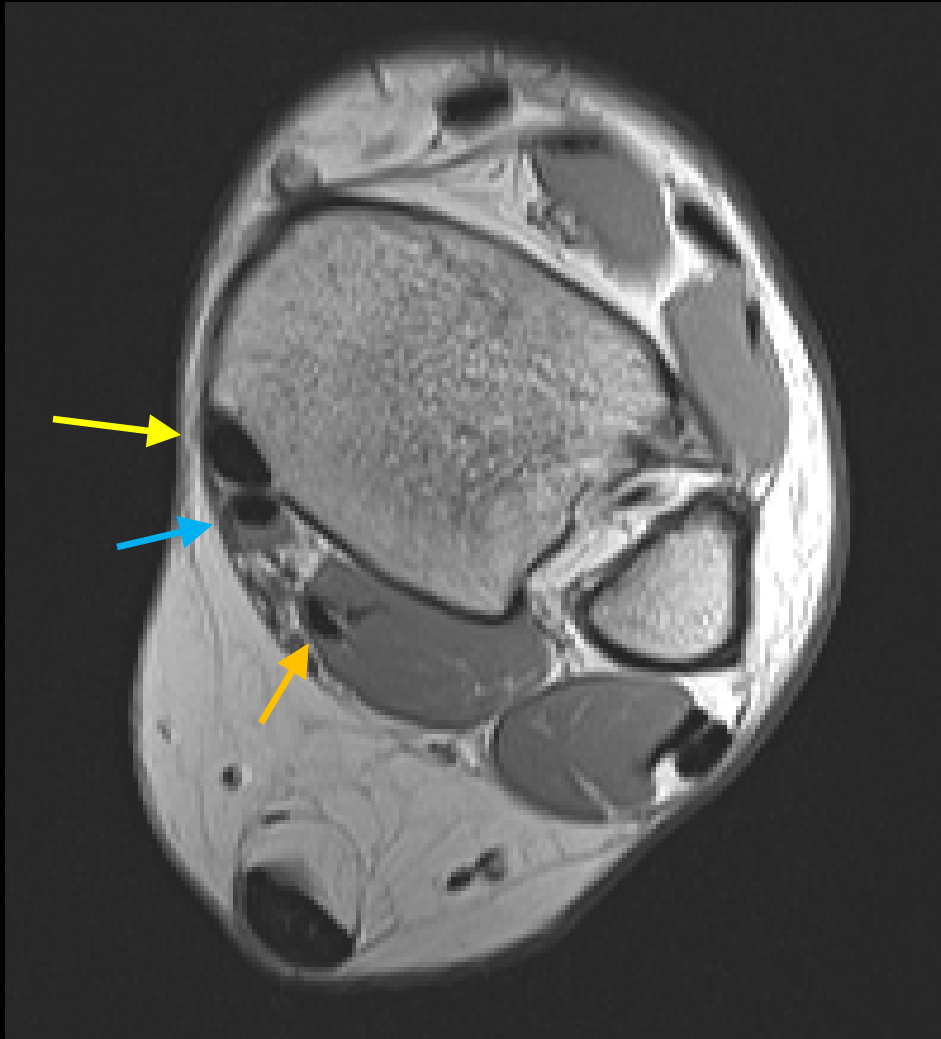
Posterior
branch





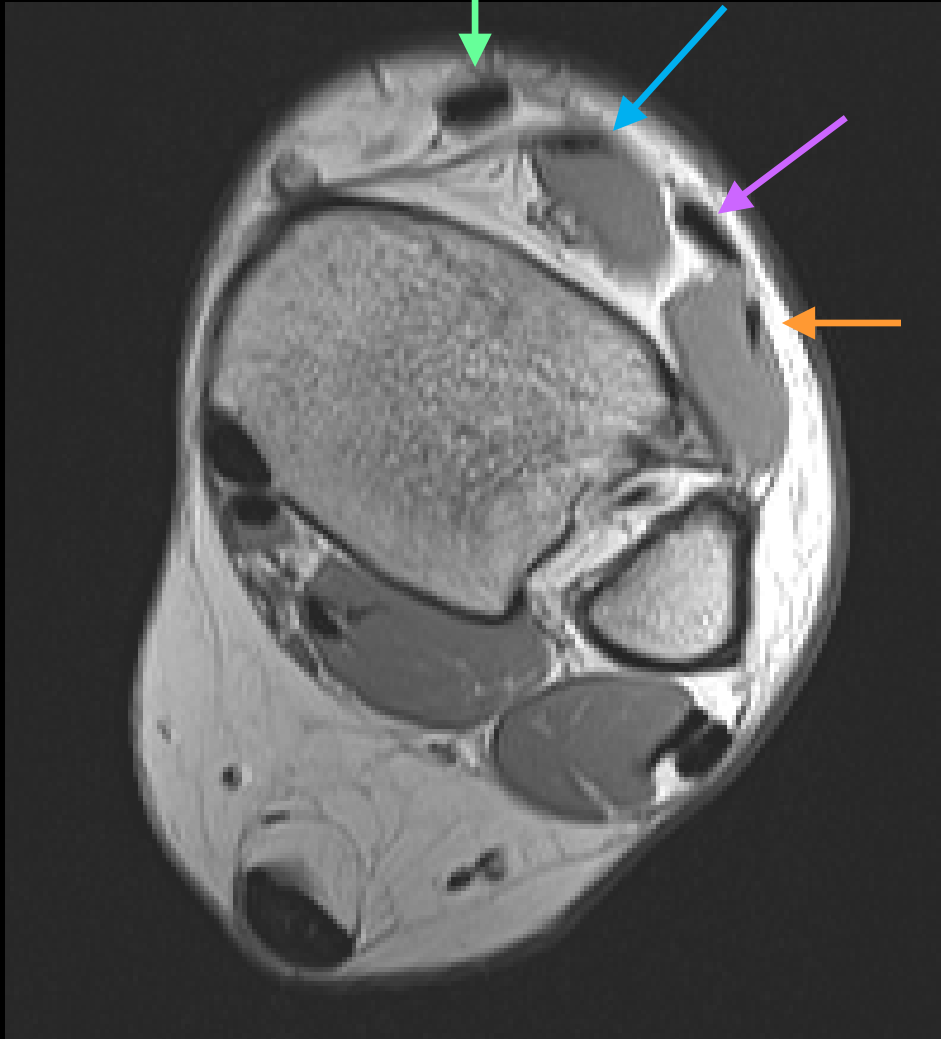


Ankle Tendons



- Deep Posterior Medial Malleolus
 - Tom (Tibialis Posterior)
 - Dick (Flexor Digitorum Longus)
 - AN (Posterior tibial A/ tibial N)
 - Harry (Flexor Hallucis Longus)

Ankle Tendons



Anterior Compartment

- Tom (Tibialis anterior)
- Hates (Extensor Hallicus)
- Dick's (Extensor Digitorum Longus)
- Pet (Peroneus Tertius)

